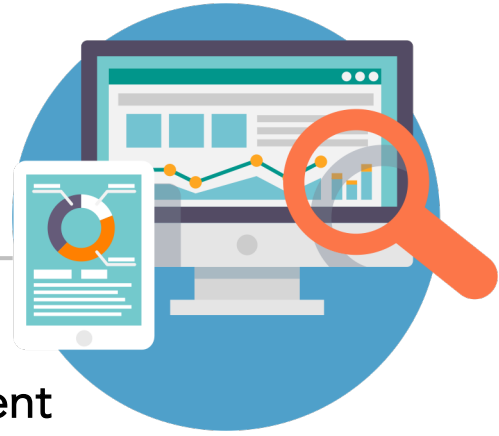


# INFOBROKER SYSTEM



Intelligent software for data management

- *City*
- *Streets*
- *Buildings*
- *Agriculture*

The data coming from the sensors in the field are managed and filtered, with the aim of creating predictive and / or deterministic models aimed at directing them to the right recipient.



Cloud-based  
Micro services

Precision up to

**99%**

compliant

**GDPR**

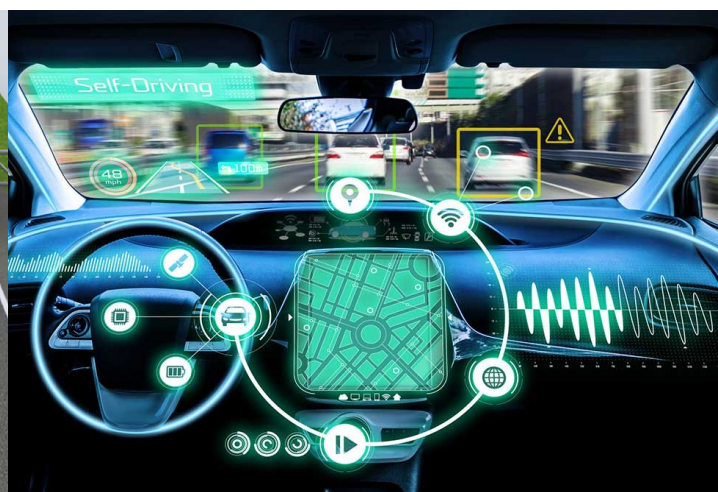
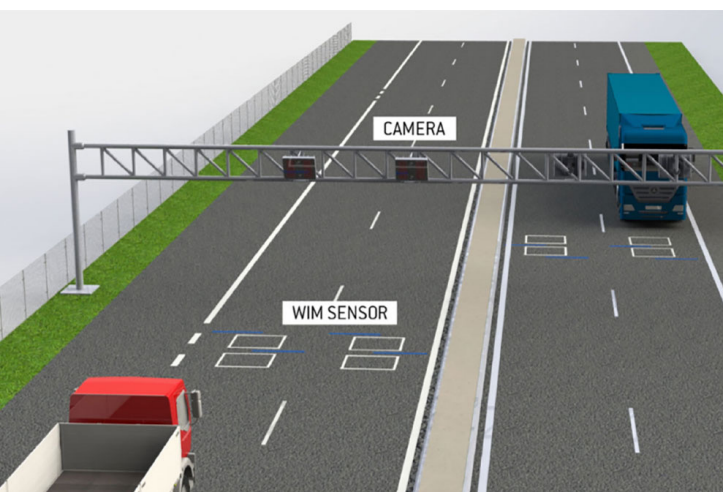


# SMART MOBILITY



Smart solutions for the mobility and communication of vehicles and road infrastructures

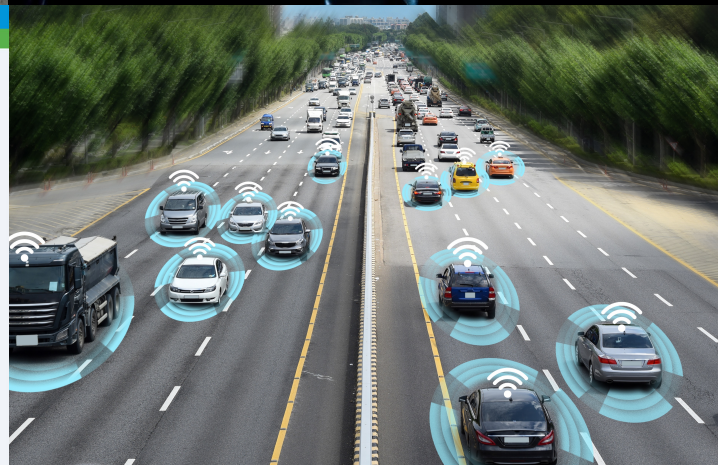
- *Weigh in motion*
- *Wi-Fi in motion*
- *Infrastructure monitoring*
- *Event-based driving*
- *V2X e C-ITS*
- *Shared use of infrastructure*



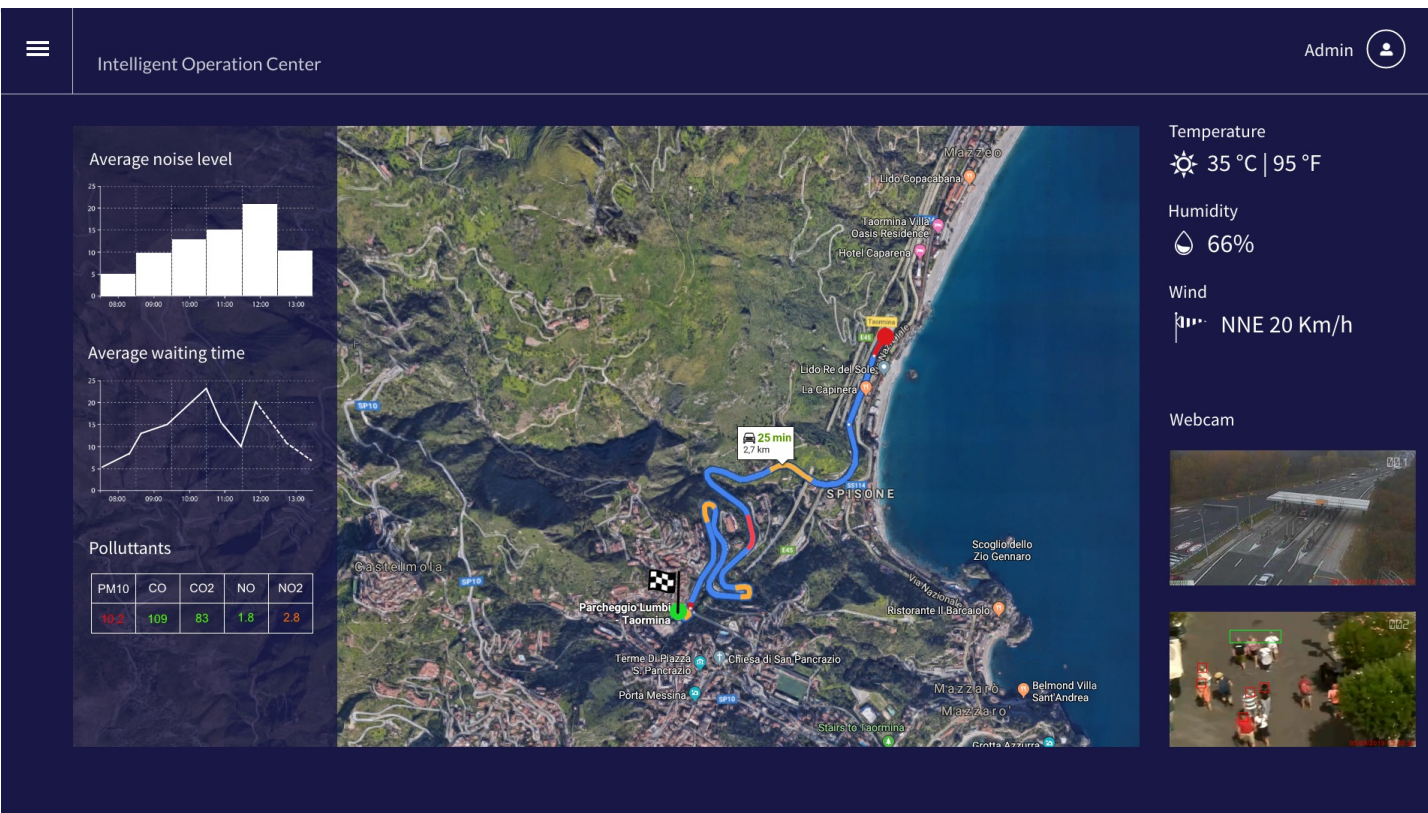
Wim Dashboard

Camera View

WIM ID	Plate	WIM number	Weight (kg)	Speed (km/h)
#1001007	08/10/2019 16:42:31	1702100100	5000 kg	52 km/h
#1001008	08/10/2019 16:42:31	1702100100	7000 kg	70 km/h
#1001009	08/10/2019 16:42:31	1702100100	2000 kg	70 km/h
#1001010	08/10/2019 16:42:31	1702100100	7000 kg	55 km/h
#1001011	08/10/2019 16:42:31	1702100100	11200 kg	57 km/h
#1001012	08/10/2019 16:42:31	1702100100	10000 kg	68 km/h
#1001013	08/10/2019 16:42:31	1702100100	9000 kg	54 km/h
#1001014	08/10/2019 16:42:31	1702100100	7000 kg	68 km/h
#1001015	08/10/2019 16:42:31	1702100100	10000 kg	50 km/h
#1001016	08/10/2019 16:42:31	1702100100	11200 kg	55 km/h







# DASHBOARD AND MOBILE DATA VISUALIZATION

## Data collection, monitoring and visualization applications

- Pollutant concentration display
- Display of temperature, pressure, relative humidity values - basic analysis
- Webcam
- Cross-correlation between data
- Default and customizable KPIs
- Operating status of sensors

### Data Sensors:

- Gas Pollutant (CO, NO, NO2, SO2, O3)
- Temperature
- Moisture
- Pressure
- Noise Pollution (DB)
- Particulate Matter (PM10)

### Predictive Algorithms

### Pollution Trend:

- Deterministic
- Based on Forecast

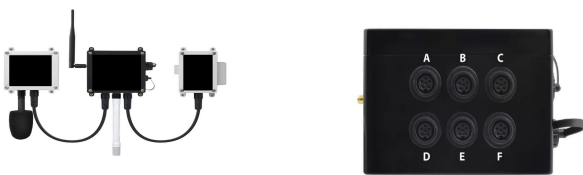
# SOLUZIONI SMART IOT

- Integrated network between the various components of the system
- Setting of a cloud system for data collection
- Management of the data flow, from sensors to the Info-navigation system
- Development of predictive and / or deterministic models
- Design and development of cloud microservices for data management

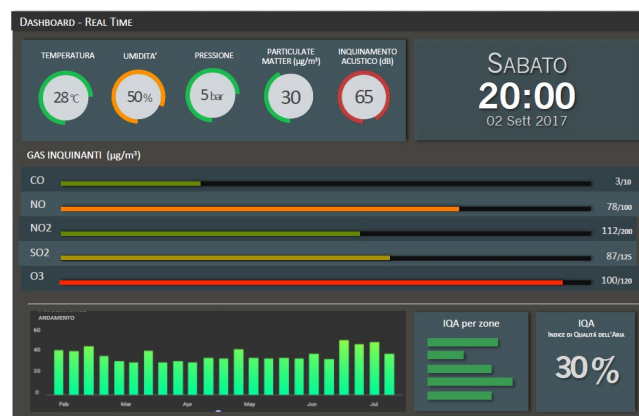
## Standards

IEEE P2413, IEEE P1451-99,  
IEEE P1931.1, IEEE P2510.

## Sensors



## Network





**T.net S.p.A.**, Via Roberto Lepetit, 8/10 – 20124 Milano Phone +39 0297084111

**[www.tnet.it](http://www.tnet.it)**



#### **WHERE TO BUY**

We use Distributors with a presence throughout the country together with whom we establish project protection policies and direct support.



#### **ASSISTANCE**

Both pre-sales and immediate post-sales technical support is available. 800 90 8000